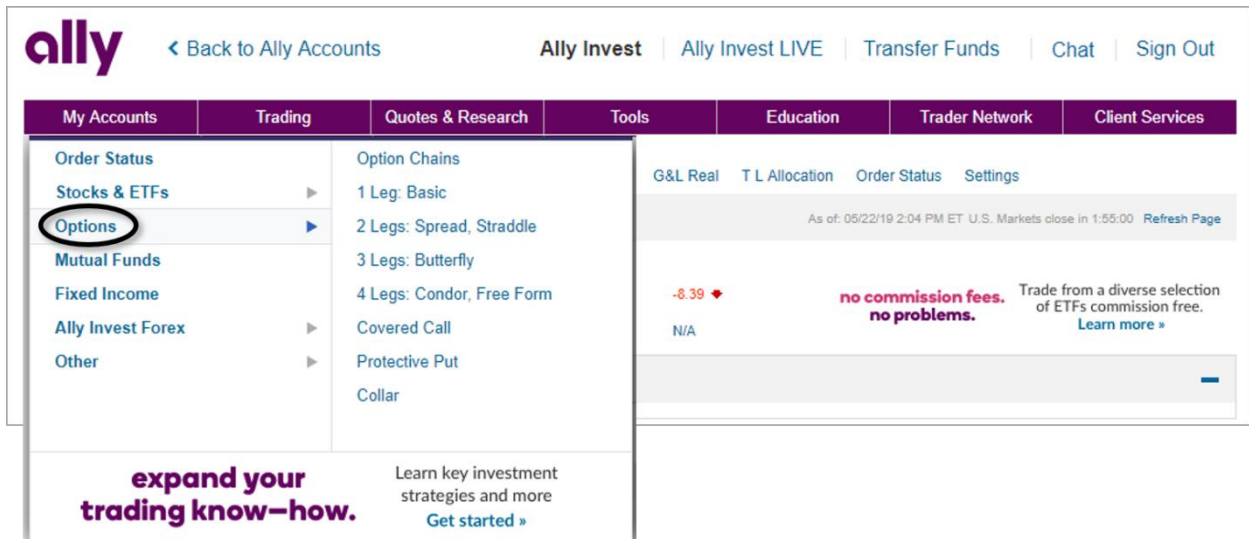


# How to Place Basic Option Trades at Ally

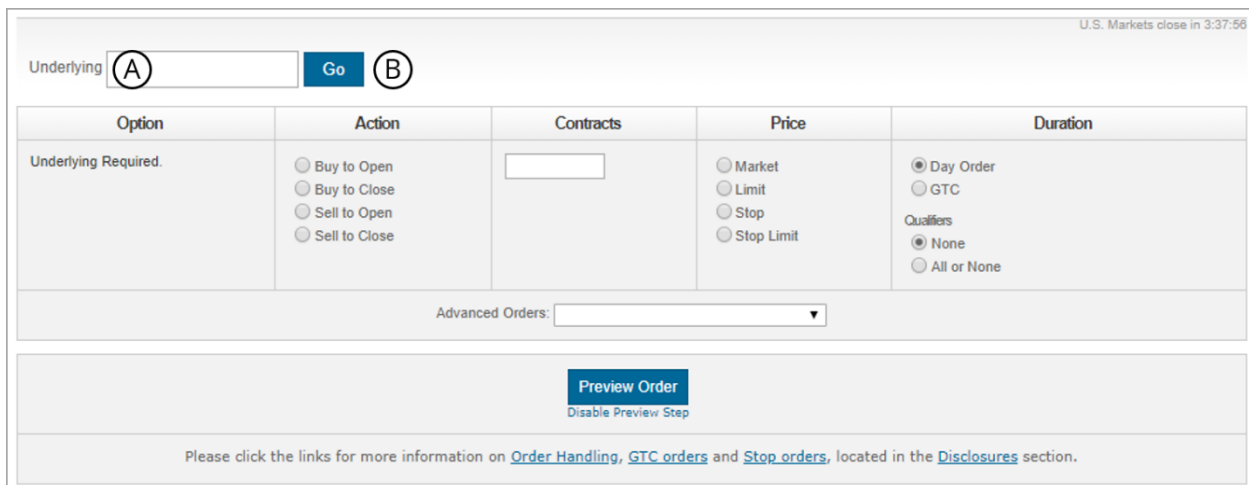
In this document you will learn the steps to place a basic option trade at Ally.

After you log in to your account you will see a toolbar with multiple tabs. The first two are *My Accounts* and *Trading*. The *Trading* tab is where all the action happens.

1. To access an Option Order Form, move your mouse to the *Trading* tab so that the dropdown menu appears. Then click the *Options* link.



2. Your screen will reload with an Option Order Form.
  - a. Enter the ticker symbol for your stock into the "Underlying" field.
  - b. Click *Go*.



3. You will not update your form for the appropriate option.
  - a. In the "Option" column use the dropdown menu to select the correct expiration date.
  - b. Use the dropdown menu to select the correct strike price.
  - c. Select "Call" or "Put" to specify which type of option you want to trade.
  - d. Set your "Action" to Sell to Open.
  - e. In the "Contracts" column, enter the number of contracts you want to sell.
  - f. In the "Price" column, select Market.
  - g. The "Duration" should stay at the Default of Day Order.
  - h. After you have completed your form, click *Preview Order*.

U.S. Markets close in 3:30:30

Underlying

	Last	Chg	Bid	Ask	Vol
	35.54	0.35	35.53	35.54	371,938

Option	Action	Contracts	Price	Duration
Jul 19 2019 36 Call <input type="text" value="Jul 19 2019"/> <input type="text" value="36"/> <input type="button" value="Call"/> <input type="button" value="Put"/>	<input type="radio"/> Buy to Open <input type="radio"/> Buy to Close <input checked="" type="radio"/> Sell to Open <span style="border: 1px solid black; border-radius: 50%; padding: 2px;">D</span> <input type="radio"/> Sell to Close	<input type="text" value="3"/> <span style="border: 1px solid black; border-radius: 50%; padding: 2px;">E</span>	<input checked="" type="radio"/> Market <span style="border: 1px solid black; border-radius: 50%; padding: 2px;">F</span> <input type="radio"/> Limit <input type="radio"/> Stop <input type="radio"/> Stop Limit	<input checked="" type="radio"/> Day Order <span style="border: 1px solid black; border-radius: 50%; padding: 2px;">G</span>
Advanced Orders: <input type="text"/>				
<input type="button" value="Preview Order"/> <span style="border: 1px solid black; border-radius: 50%; padding: 2px;">H</span> <small>Disable Preview Step</small>				
Please click the links for more information on <a href="#">Order Handling</a> , <a href="#">GTC orders</a> and <a href="#">Stop orders</a> , located in the <a href="#">Disclosures</a> section.				

4. When your screen reloads, you will be able to place your order.

## THE FINE PRINT

Snider Advisors has an economic incentive for recommending that clients open an account with Ally. Specifically, Snider Advisors receives a flat referral payment for each new account it refers to Ally. More detailed information about the relationship and our fiduciary responsibility can be found in our ADV Part 2A. Clients may contact Snider Advisors with any questions about the terms of the Agreement with Ally.

The intent of this document is to help expand your financial education. Although the information included may be relevant to your particular situation, it is not meant to be personalized advice. When it comes to investing, insurance, and financial planning, it is important to speak to a professional and get advice that is tailored to your unique, individual situation. All investments involve risk including possible loss of principal. Investment objectives, risks, and other information are contained in the [Snider Investment Method Owner's Manual](#); read and consider them carefully before investing. More information can be found on our [website](#) or by calling 1-888-6SNIDER. Past performance is not indicative of future results.

Options involve risks and are not suitable for all investors. Before opening an option position, a person must receive a copy of Characteristics and Risks of Standardized Options. Copies of this document are available by calling 888-6SNIDER. Please read it carefully before investing.

If you have any questions, please contact Snider Advisors  
at 888-6SNIDER (888-676-4337) or [support@snideradvisors.com](mailto:support@snideradvisors.com)